

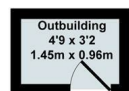


11 Hensington Road, Woodstock, Oxfordshire, OX20 1JQ

£1,695 PCM - 6th March 2026.

- Period property
- Gas CH
- EPC rating D
- Recently re-furbished
- Garden
- Mains gas electricity and water

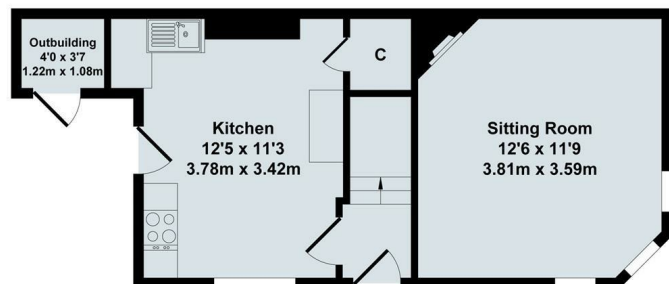
- Situated in the Town Centre
- Council tax Band C



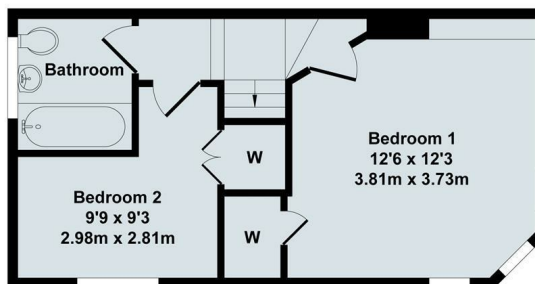
Outbuilding

Total Approx. Floor Area 656 Sq.Ft. (60.90 Sq.M.)

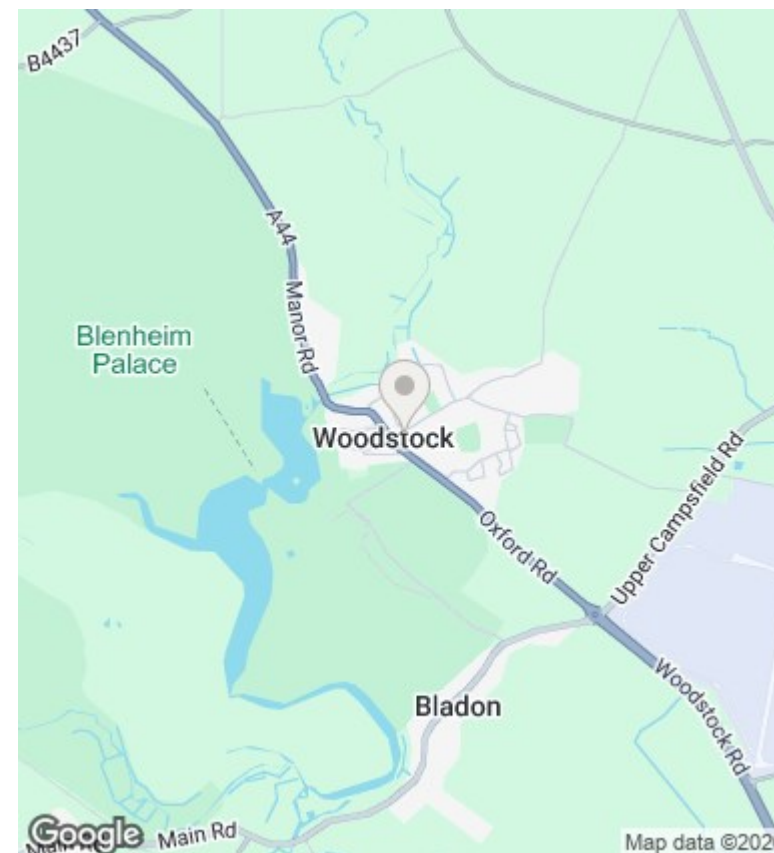
All items illustrated on this plan are included in the "Total Approx Floor Area"



Ground Floor



First Floor



Directions

Viewings

Viewings by arrangement only. Call 01865 515900 to make an appointment.

Council Tax Band

C

EPC Rating:

D

Energy Efficiency Rating		
	Current	Potential
Very energy efficient - lower running costs		
(92 plus) A		
(81-91) B		85
(69-80) C		
(55-68) D	58	
(39-54) E		
(21-38) F		
(1-20) G		
Not energy efficient - higher running costs		
England & Wales	EU Directive 2002/91/EC	